



Razorback Lookout, Flinders Ranges, southaustralia.com

This spring, the Flinders Ranges comes alive with art

The arid Flinders Ranges have long inspired artists, filmmakers and musicians travelling through the region to take in the rich colours, peace and timelessness of this ancient landscape.

Flinders Ranges A Brush With Art is an artist led, month long event showcasing a number of solo and group exhibits and workshops scattered across the Flinders Ranges.

We look forward to welcoming you to our region.

For more information, visit:

WWW.ABRUSHWITHART.COM.AU

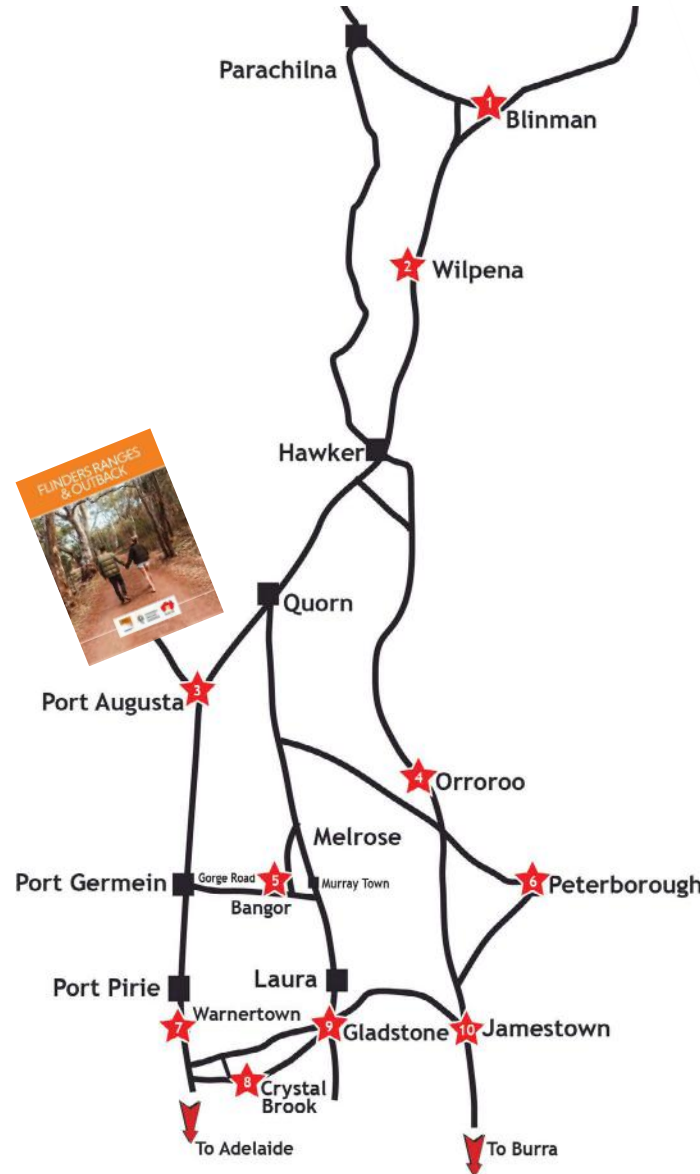
SPONSORS

The 2021 A Brush With Art event wouldn't be possible without the generous support of our sponsors. We would like to sincerely thank:



How do I find an exhibition?

Link the numbers next to the exhibitions in the program with the numbers on the map. More detailed maps available in the Flinders Ranges & Outback Visitor Guide. www.flindersandoutback.com.au



WORKSHOPS

Introduction to Creative Watercolour

Collect materials and learn basic techniques to allow you to continue exploring this wonderful medium, adapting your skills to any subject.

Venue: The Old Survey Art Gallery

Tutor: Judy Elliott – Maddison

Dates: 15, 16 and 17 October

Time: 10am – 4pm

Cost: *New Students:* \$210 for 3 days or \$75 per day (must attend minimum of 2 days); *Past Students:* \$50 per day (no minimum)

BOOKINGS ESSENTIAL

Judy Elliott – Maddison

Ph: (08) 8666 5242 / 0402 807 814

E: elliott.maddison@activ8.net.au



Arts Now Here Workshop Series

Fabric Paints – Just Playing, 11 September

Tutor: Cheryl Fischer

Mixed Media Workshop, 16 September

Tutor: Mary Bateman

Gel Print Workshop, 25 September

Tutor: Colleen Mulholland

Music Carpet, 1 October

Tutor: Ken Fischer

Make Your Own Weaving Loom, 9 October

Tutor: Trevor Faggotter

Mixed Media Workshop, 14 October

Tutor: Mary Bateman

Visit: facebook.com/Artsnowhere



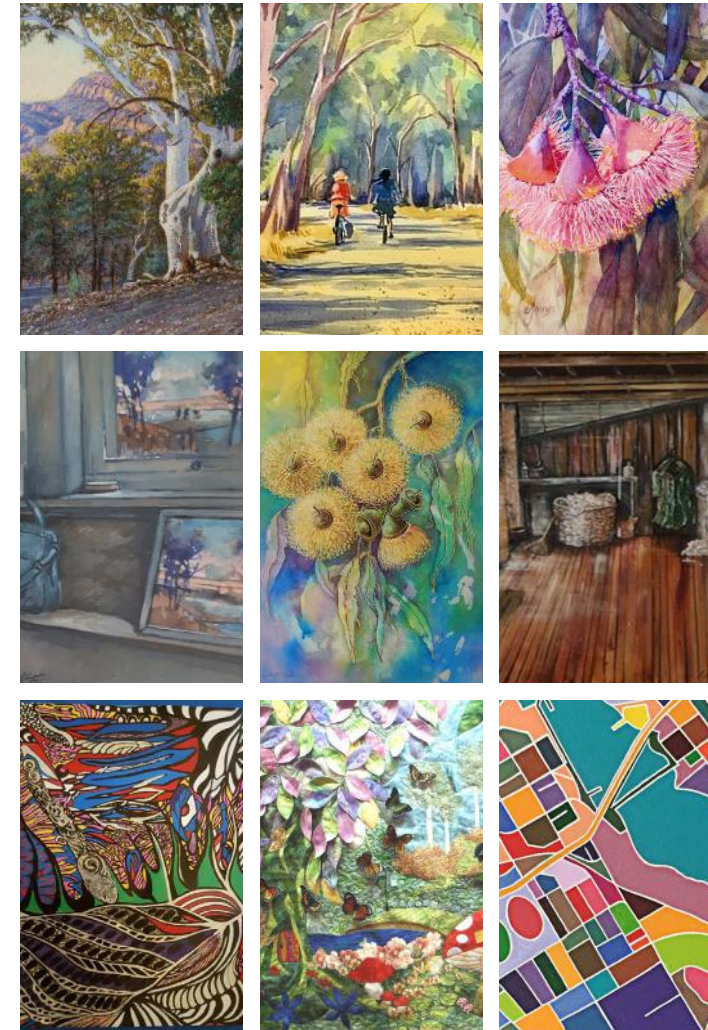
Bowman Park Workshops

Workshops for children and adults will be held on Sunday 5th and Sunday 12th September. For further details, please refer to the website www.bowmanparksa.com

SPRING 2021

flinders ranges a brush with art

4 SEPTEMBER - 10 OCTOBER



1. Artists of the Ranges
Blinman Progress Association
18 September - 10 October
10am - 4pm Daily



This diverse exhibition displays the works of well-known South Australian artists and features traditional landscapes, modern and abstract works. The exhibition has a strong emphasis on the Flinders Ranges and the Outback. In recent years the addition of custom designed jewellery has added another dimension. The exhibition will also feature a selection of sculptural works.

Blinman Memorial Hall, Mine Road, Blinman SA
Ph: (08) 8648 4863
E: blinmanartexhibition@outlook.com

2. The Flinders Revealed
19th Anniversary

Painters of the Flinders Ranges
4 September - 4 October
9:30am - 4:30pm Daily

Official Opening: 2pm, Saturday 4 September



Painters of the Flinders Ranges hosts this spectacular 19th annual exhibition of 100 fine art paintings in various mediums by our artists. The works on display present various impressions of the majesty, mystery and allure of the ancient Flinders Ranges. Come and chat with our artists who are working daily in the Woolshed.

Old Wilpena Woolshed (off entrance to Wilpena Pound Resort), Wilpena Rd, Via Hawker SA
Ph: 0400 223 052
E: chappygraham@bigpond.com
W: www.paintersoftheflindersranges.org.au

3. Our Place Up Close
Curdnatta Art Group
4 September - 30 October
10am - 12pm, Wednesday and Saturday



10am - 2pm, Thursday and Friday
The ranges, waterways, plains, flora, fauna, lifestyle, colours, textures and more. Local artists and photographers explore the sense of "Our Place" and get up close and personal, sharing their interpretations and expertise. A range of mediums will be on display including acrylics, oils, pastels, prints, textiles, sculpture and photography.

Platform Gallery, 2 Stirling Road, Port Augusta SA
Ph: 0418 837 534
E: curdnatta@gmail.com



4. Colours of Orroroo Art Exhibition
Colours of Orroroo Art Group
18 September - 4 October
10am - 4pm Daily



Colours of Orroroo Art invite you to enjoy art from our community. Our artists enjoy working in many art mediums – oils, watercolours, acrylics, mixed media and sculpture. We are also showcasing work from our local school and kindergarten students. We will have many works for sale.

Orroroo Town Hall, 17 Second Street, Orroroo SA
Ph: 0428 829 186
E: coloursoferroroo@gmail.com



5. From Dawn 'til Dusk
The Old Survey Art Gallery
4 September - 10 October
1pm - 4pm (Closed Mondays and Tuesdays)



Using a variety of media, local Artists Judy Elliott-Maddison and Andrea James present a diverse collection of artworks depicting the beauty of the natural environment and the rustic charm of farm and country life.

58 Survey Road, Bangor SA
Ph: (08) 8666 5242 / 0402 807 814
E: elliott.maddison@activ8.net.au



6. Trackside Studio
Heather and Des Parker
4 September - 10 October
1pm - 5pm, Thursday to Sunday



The variation of light on land and the built environment has been a constant theme in Heather's work, with a special interest in watercolour and its ability to capture the moment of a shifting pattern of light. This series focuses on domestic scenes at Trackside Studio. Using mixed media – acrylic, pastel, various markers and charcoal – Des has created landscapes of poetic beauty "*black earth banks, whispers, darkness, stone pools, dense wild olives trees along banks, soaring gum trees, a shaft of sunlight wobbling down, making luminous dots*".

113 Railway Tce, Peterborough SA
Ph: 0400 461 100
E: heatheranddesparker@gmail.com

7. Capturing Visual Stories
Arts Now Here
(Bridge to Nowhere Arts)
4 September - 10 October
Wednesday 10:30am - 3pm; Friday 10:30am - 3pm; Saturday 10:30am - 1pm



The Warnertown Oval Exhibition will host "action" art experiences for members and visitors. Exhibitions of Textiles, Fibre Art, Macrame, Mixed Media, Pastels, Needle Work, Acrylic & Watercolours, 3D arts & crafts with the added dimension of music to highlight artists' stories from the region. We are exploring different applications, media and themes related to people, culture, environment & beliefs as part of our 3 Year International Cartography Project.

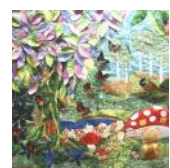
913 Abattoirs Road, Warnertown, SA
Ph: 0497 353 148
E: napnatural@schwarz.id.au

8. Bowman Park Exhibition
Bowman Park Management Committee
3 September - 12 September
10am - 4pm Daily



Official Opening: 5pm, Friday 3 September
Crystal Brook and local regional artists, sculptors and photographers, in conjunction with the Bowman Park Management Committee, present a range of innovative creations for display and sale. A variety of mediums including acrylic, oil, pencil, mosaic, wood, and wire will be instrumental in building an artistic feast for visitors to enjoy. *Workshops available.*
140 Bowman Park Road, Crystal Brook SA
Ph: 0400 291 598
E: lj.saunders@hotmail.com
W: www.bowmanparksa.com

9. Gladstone Annual Art Exhibition
Gladstone Community Development and Tourism Association Inc.
11 September - 8 October
10am - 4pm Daily



This Annual Exhibition invites and presents the work of both local and Australia wide artists in the fields of Fine Art, Photography, Sculpture, Applied Art, Fibre Art and Quilting. Innovative and original forms of artistic expression are encouraged. The artwork by young artists from local schools is a feature.

Gladstone Town Hall, Fifth Street, Gladstone SA
Ph: 0417 844 481
E: kilkivan@westnet.com.au
W: www.gladstonesa.com.au

10. From Here and There
Belalie Art Gallery
12 September - 1 October
1pm - 4pm (Closed Saturdays)



A coming together of local and regional artists in a unique exhibition. Working in a variety of mediums they draw inspiration from the environment around them, including urban and rural landscapes, still life, flower studies, modern and abstract works. Works available for purchase.

Belalie Art Gallery, 6 Irvine Street, Jamestown SA
Ph: 0407 241 567 (text only)
E: jcrawf@internode.on.net